

More Accessible Data for the Millennial and the Skeptic

Elliott Middleton

Product Manager, AVEVA Group plc

27 April 2018

The Schneider Electric industrial software business and AVEVA have merged to trade as AVEVA Group plc, a UK listed company.
The Schneider Electric and Life Is On trademarks are owned by Schneider Electric and are being licensed to AVEVA by Schneider Electric.



Millennials

- Assumes no training needed
- Expects an app to just work
- When it doesn't, try another
- Doesn't have time (or interest) to “master” it



Skeptic

- Prefers to be in control
- Concerned about security
- Good reasons we've always done it that way

InSight Vision

Be the “first source” to check
for operational information
for everyone except the front line operator

- Protects customer intellectual property
- Is frictionless to get started & use
- Delights users
- Makes the abnormal obvious
- Learns from operational & usage history
- Continuously delivers new value
- Includes opportunities for partners to add value

Online InSight Feedback

“This software reminds me of Apple”.

“Your product sure makes me popular!”

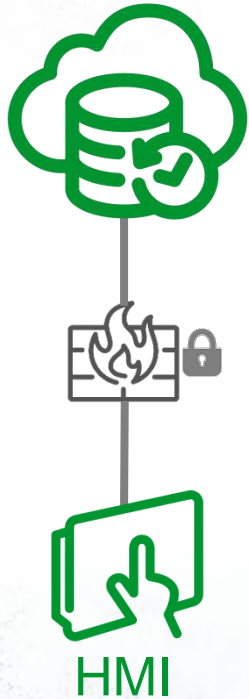
“It’s like voodoo, it just works”

“Already on the first day of the trial we found immense value with Online InSight”

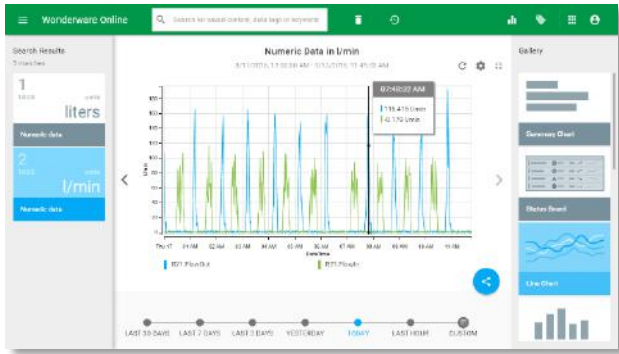
“Initially we thought we would give it just to the night-shift operators, but within days the supervisor wanted it, the device calibration contractor wanted it, the maintenance team wanted it...”

Highest Net Promoter Score for Wonderware (2017)

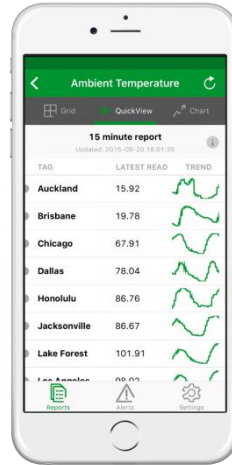
Wonderware Online InSight



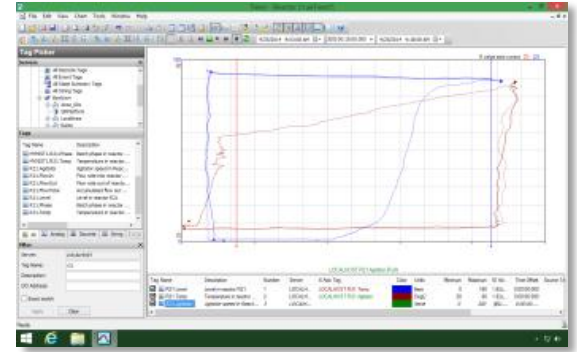
- No assembly required
 - Easily import existing HMI applications
 - Frictionless to find & present the right information
- Cost-effective for small applications
 - HMI-only embedded (OEM) applications
 - Vertical applications (e.g. water, coal seam gas)
 - Small applications in large companies (e.g. 5-tag farm)
- Remove obstacles to a Historian
 - De-skill setup (5-minutes or less, zero training)
 - Eliminate routine maintenance (disk, passwords, etc.)



Browser-based Tools
(embeddable)



Native Mobile Tools



Rich Desktop Tools

Deployment Options



Online Solutions

Consider for future
Next refresh cycle

Hybrid

Supplement on-premises
Realize the value
Minimize risk

Existing Investments

Infrastructure
Applications



Hybrid Opportunities

Supplemental I/O

Low-cost I/O
Sensors
Wiring
Bypass OT



Accessible

Internal
Outside OT
Mobile
Consolidated
Partners
Suppliers
Customers



Stranded Applications

Low infrastructure
Scarcity of skilled staff
Emerging economies
Secondary automation



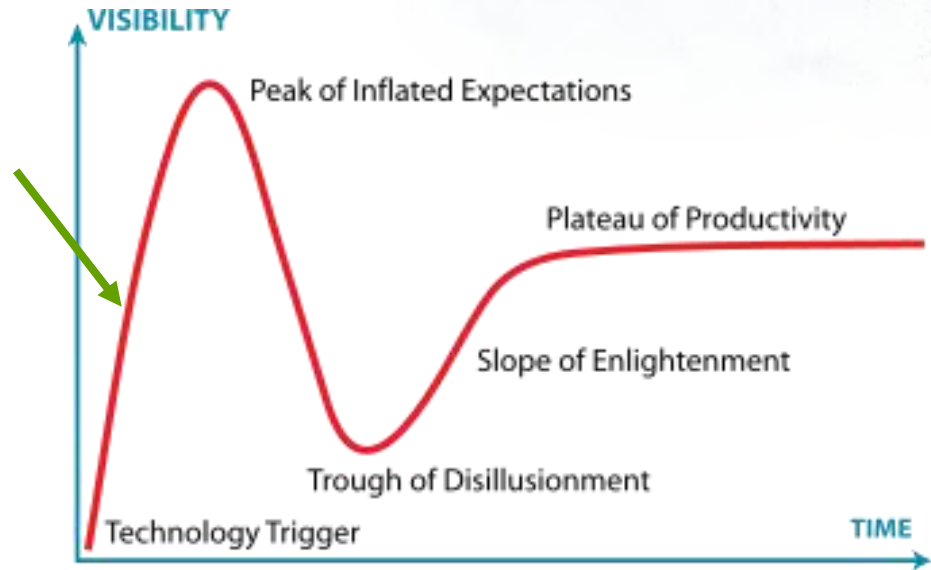
Internet of Things:

Devices & sensors



IoT Hype

- As with
 - Object-oriented
 - Web
 - Cloud
- Every Vendor
 - Piling on
 - Making claims
 - Capturing attention
- In Practice: Everything that supports some kind of Ethernet

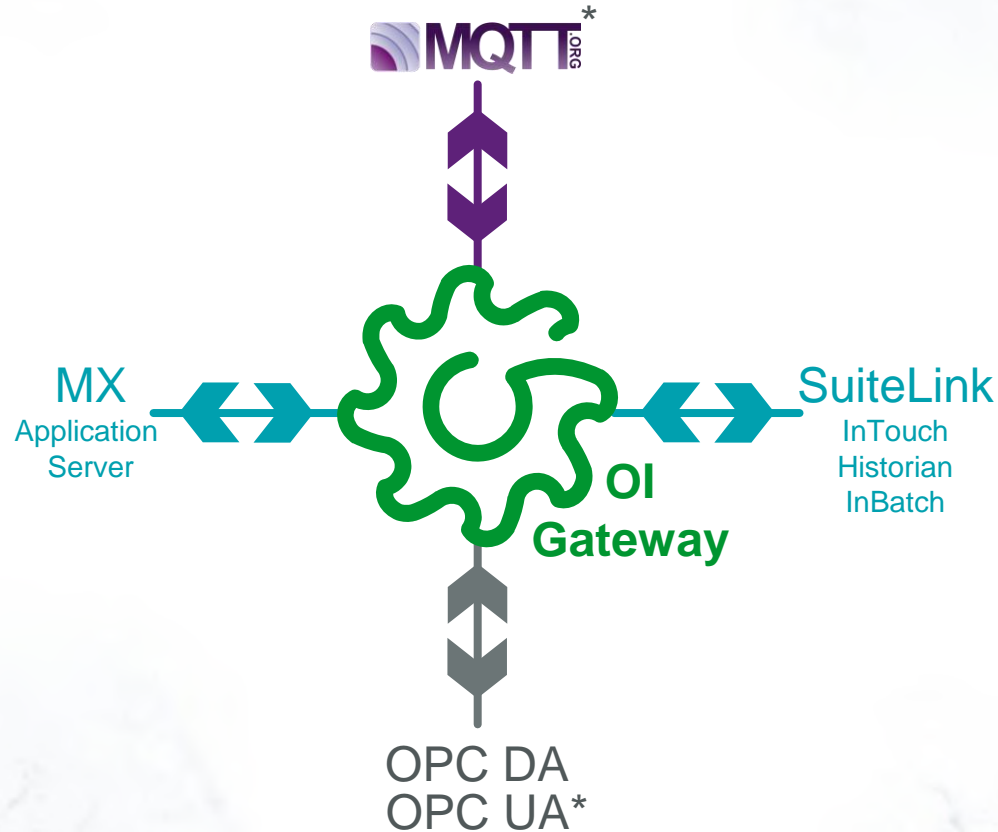


“Consumerized” Instrumentation

- Lower cost to
 - Acquire
 - Apply
 - Own
- “Good enough” for less safety-critical applications
- Radical change in pricing models (~2%)
- MQTT Emerging As Dominant Interface

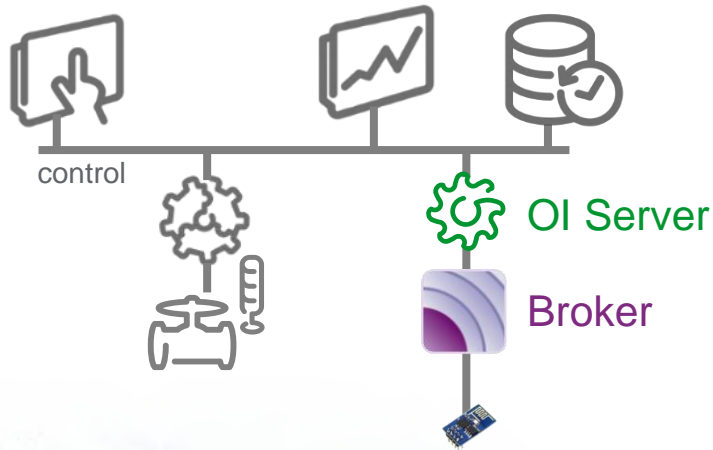


Operations Integration Gateway



* New in OI Gateway (vs. FactorySuite Gateway)

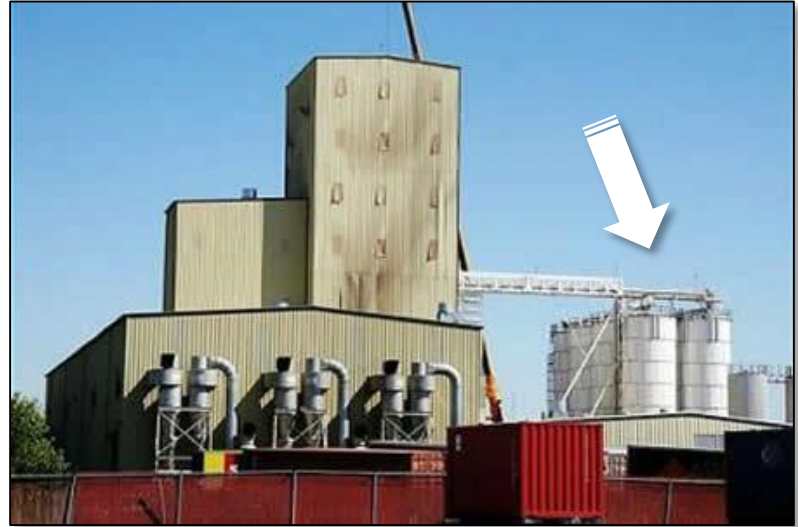
Use Case 1: Supplementary I/O



- Integrate into existing infrastructure
- Add cost-effective I/O
- Use OI Gateway

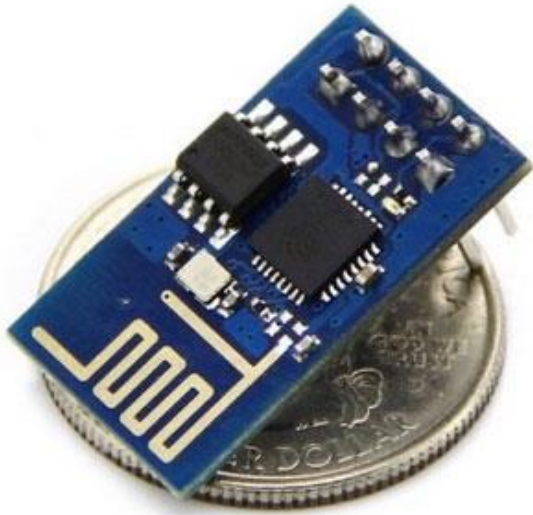
Cost-effective Instrumentation

- Where can you benefit from additional instrumentation?
- What about peripheral areas?
 - Raw material silos?
 - Remote areas?
- Information Needs
 - Share raw material inventory levels with select vendors
 - Visibility to raw material environmental factors





System on a Chip (SoC): ESP8266



WiFi

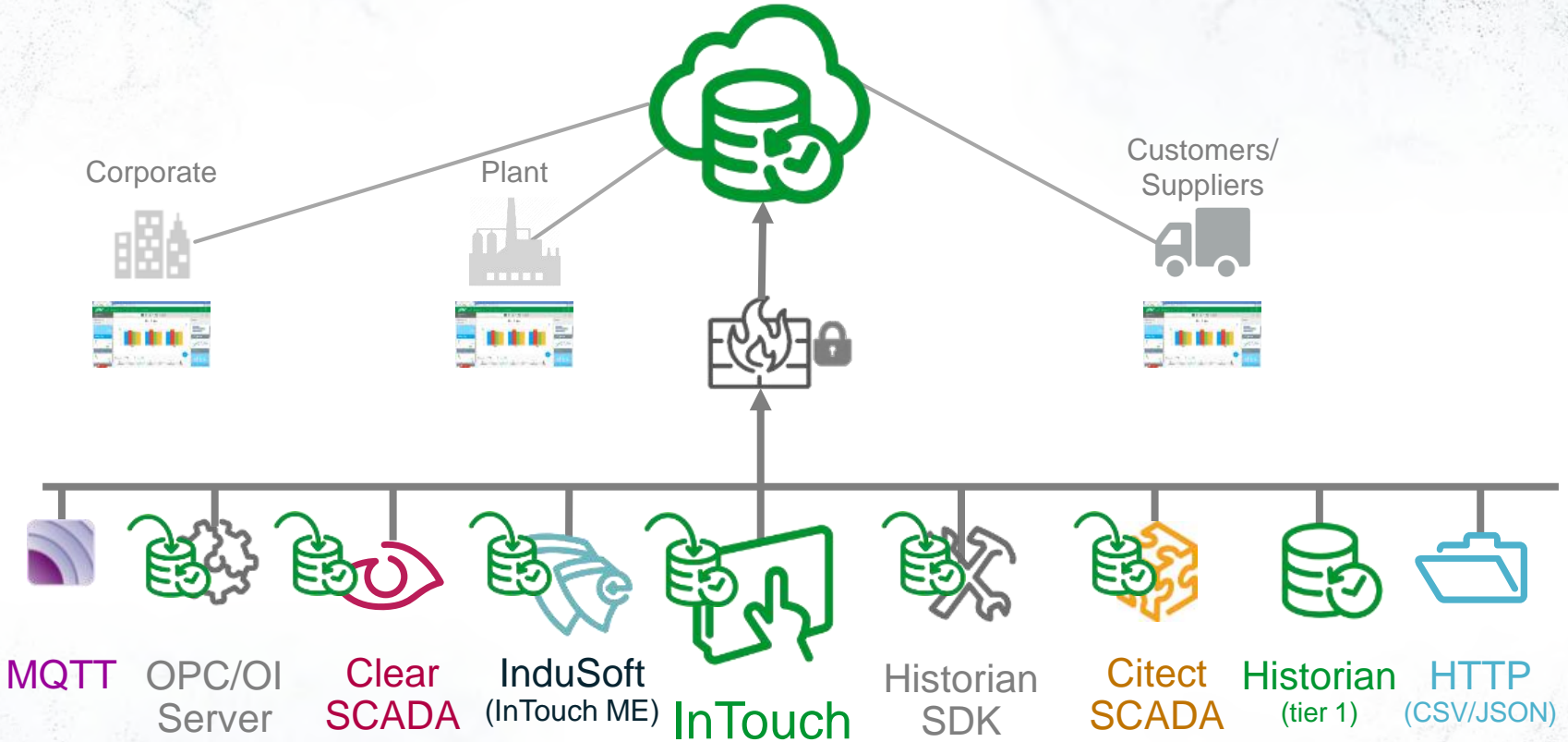
Serial

1 x Analog-digital

8 x Digital I/O

Arduino/MQTT Support

\$ 3.⁰⁰



Search

🔍 reactor

Saved Content

- 📄 name includes reactor
- 📄 about Reactor

Data

- name includes reactor (49)
 - Reactor3.InletValve (11)
 - Reactor3.Level (11)
 - Reactor3.Temp (11)
- sourced from reactor (3)
- description includes reactor (61)

Today

Saved charts
Tag names, descriptions, units

This Year

Assets
Batches
Work Orders

Beyond

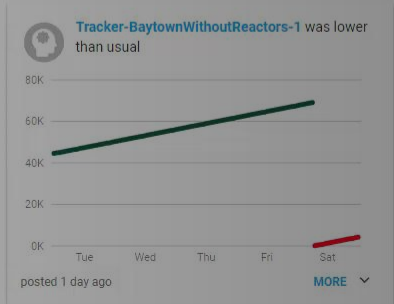
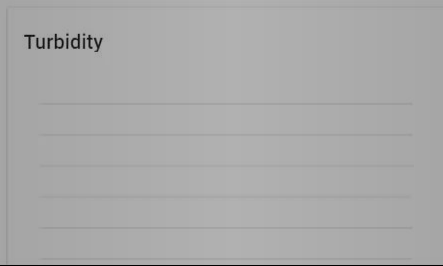
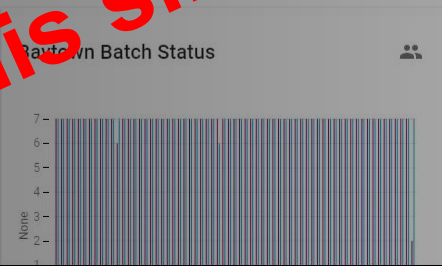
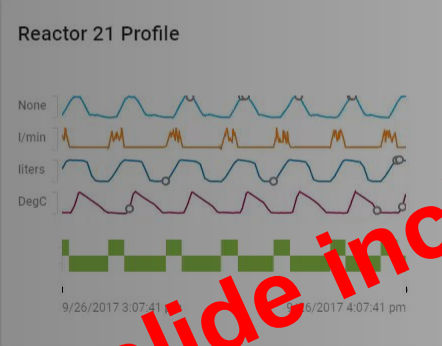
“Best”, “Top”
Geo-location





🔍 Search for saved content, tags, or keywords.

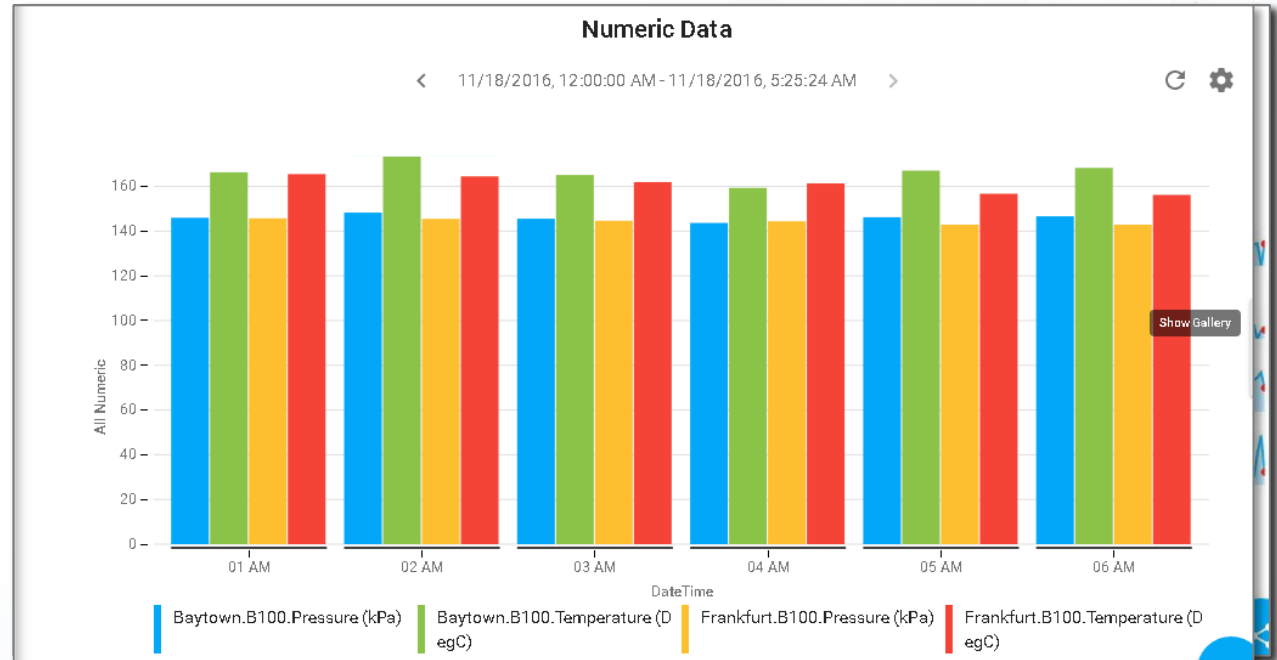
📄 SUGGESTED CONTENT (4) 📊 DASHBOARD (3)



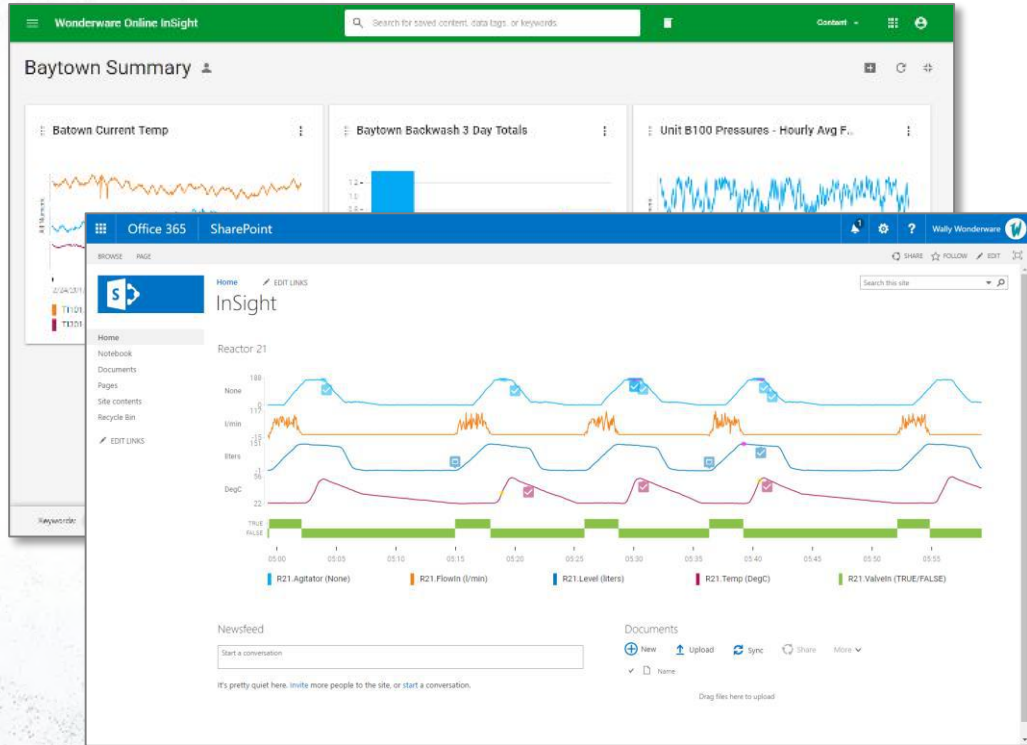
This slide includes an embedded video

Simple Browser Access: InSight

- Trends with context
- Pareto charts
- Status Boards
- Summary statistics



InSight Dashboards



- Simple dashboards
- Drill through
- Embed in other portals

Vanity Landing Pages & Themes (OEM)

Secure | <https://water.online.wonderware.com>

Secure | <https://online.wonderware.com>



Wonderware Online
Turn your data into Insights
IT'S EASIER.
[TRY IT NOW](#)

Powered by Teclad



WATER Co

Search for tags, trends or other time series data

New to Water Co Industrial Insights? We'll walk you through it.

SUGGESTED CONTENT | DASHBOARDS

Water Pressure - Last 28 days

Pump Flow Rate - 3 days

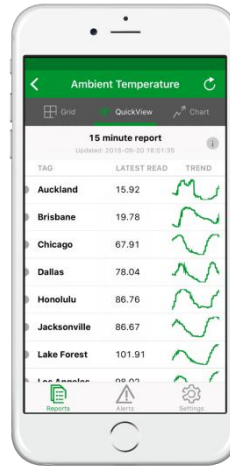
NEWS

San Diego Air Pressure appears unstable

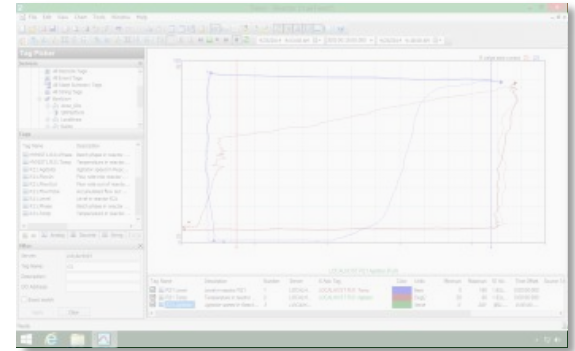
Pump	Average Flow Rate
PUMP1	~1000
PUMP2	~700
PUMP3	~800
PUMP4	~200



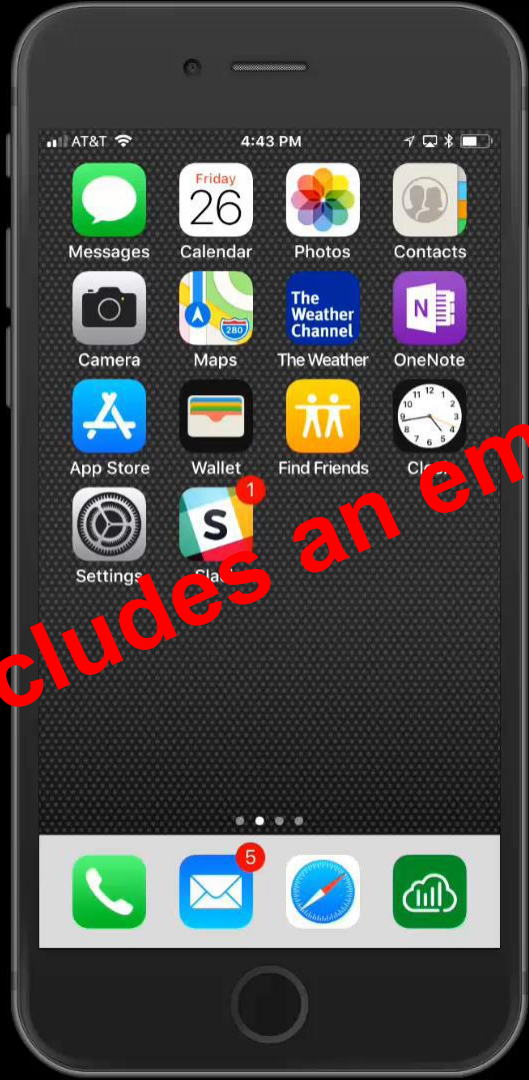
Browser-based Tools
(embeddable)



Native Mobile Tools



Rich Desktop Tools



This slide includes an embedded video

Alerts In Browser

Wonderware Online InSight

Edit Alert For R21.Temperature

current value is 53.212 DegC

Notify me when the value

DELETE

is greater than

is greater or equal to

is equal to

is not equal to

is less than

is less than or equal to

is not between

is between

120

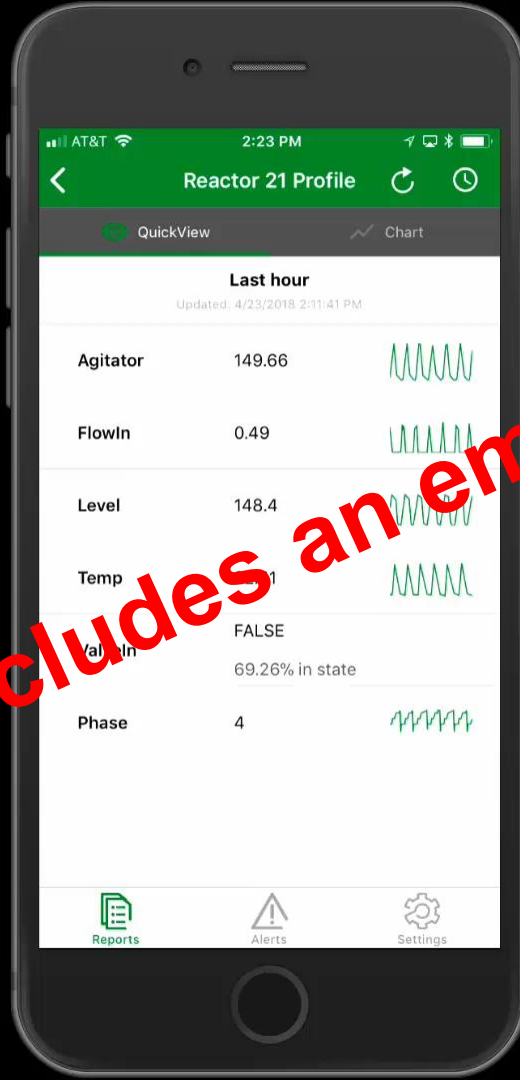
CANCEL SAVE

Alert Me When > 120

Edit Alert

Numeric data

LAST 30 DAYS



This slide includes an embedded video

Alerts

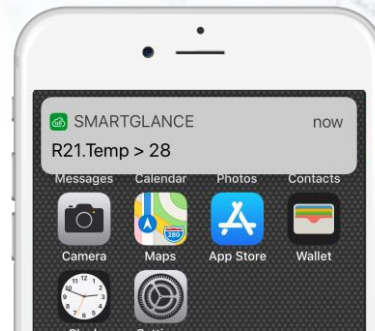
Today



Personal

>
<
between
...

Simple Rules



Mobile Notification

2018



Team



Advanced Rules



Application Integration

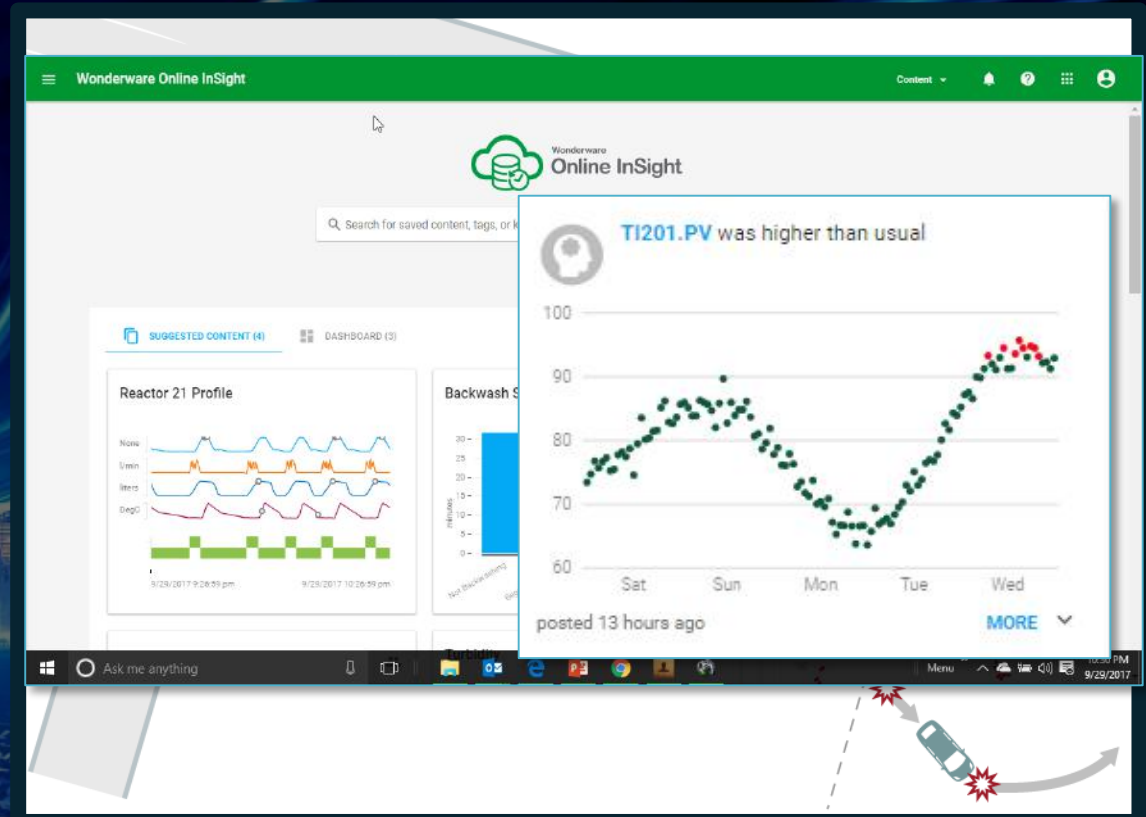
Machine Learning

Prerequisites

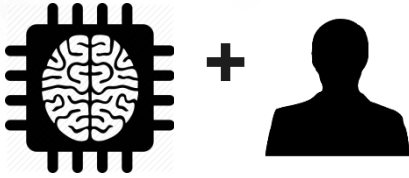
Data Scientists
Real Data
Normal
Exceptions

For The Rest Of Us

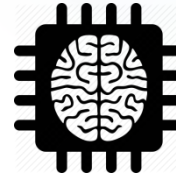
Zero Configuration
Personalized Curation
Accessible Results



Machine Learning



- Supervised
 - A human expert guides/configures
 - Higher-value results
- Example: PRiSM
 - Engineer identifies evaporator as high-value equipment
 - Finds related instruments
 - PRiSM reports anomalies



- Unsupervised
 - Automatically configured
 - May report insignificant discoveries
- Example: Newsfeed
 - No configuration required
 - Reports anomalies
 - Feedback part of training

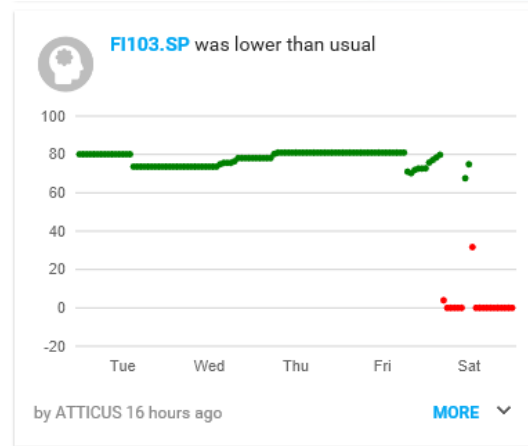
Newsfeed Updates

- Anomaly Detection

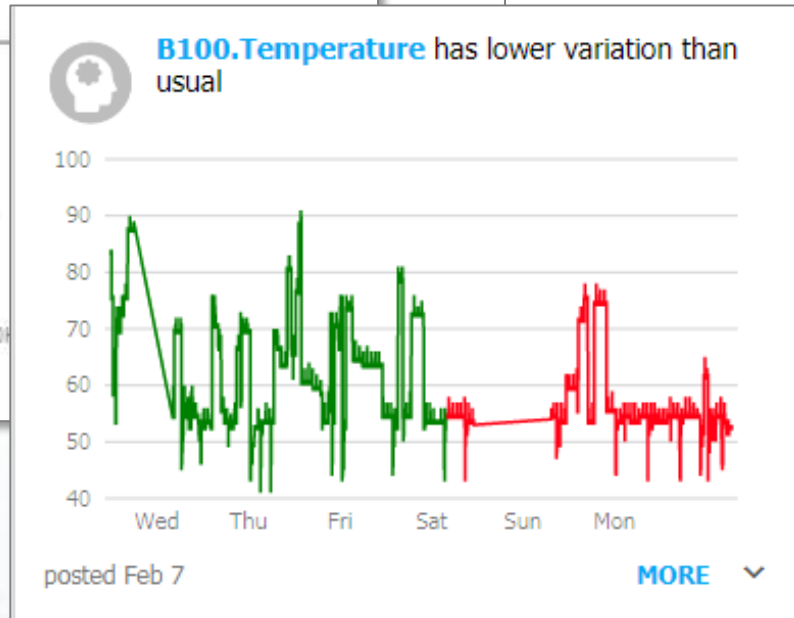
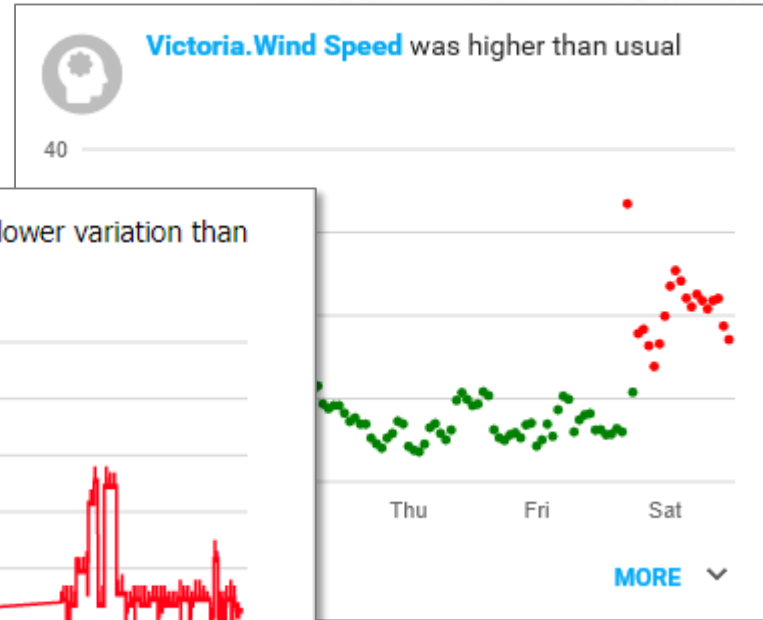
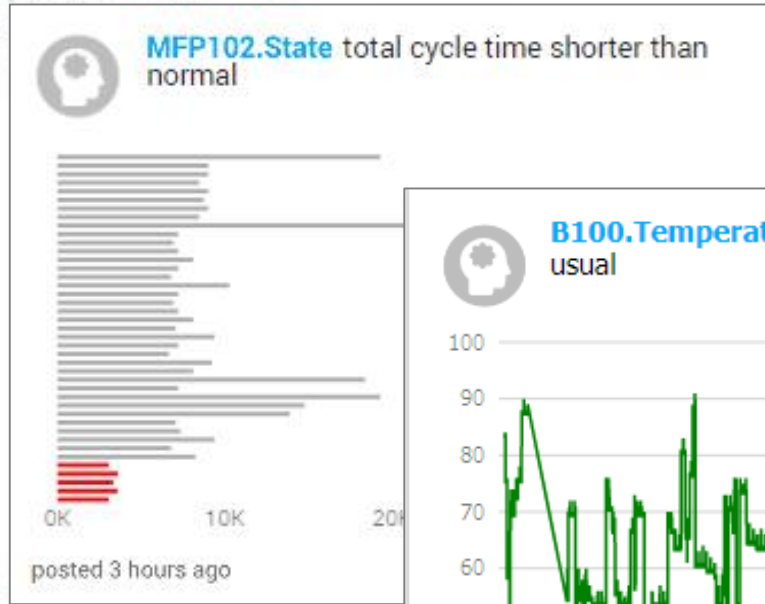
- Flatlined data
- Change in value range
- Change in cycle times
- Change in distribution

- Curator

- Assigns significance “score” to each report
- Filters reports based on user interests

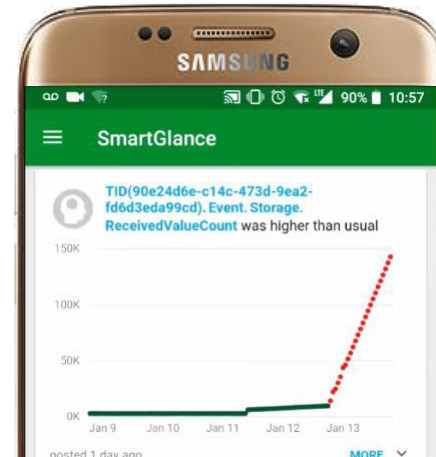
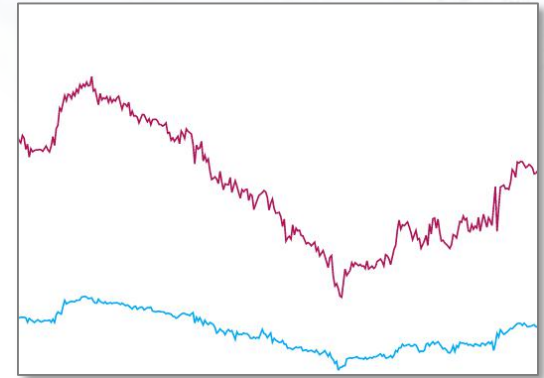


Anomaly Detection: News



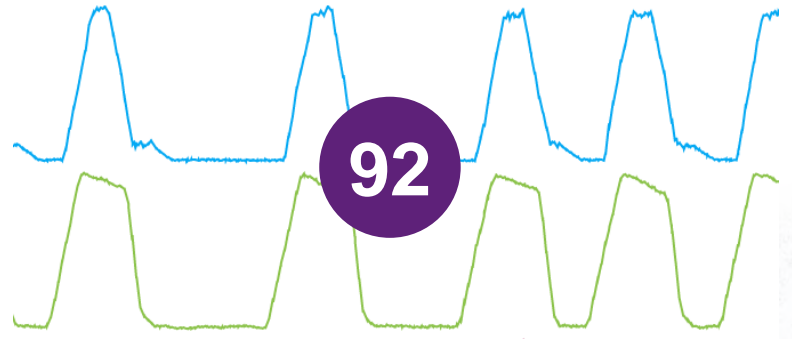
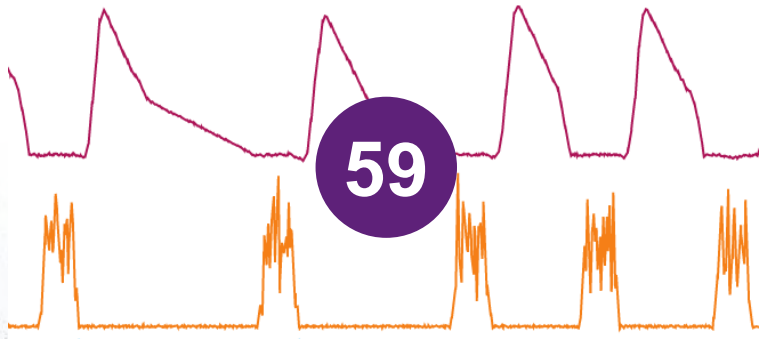
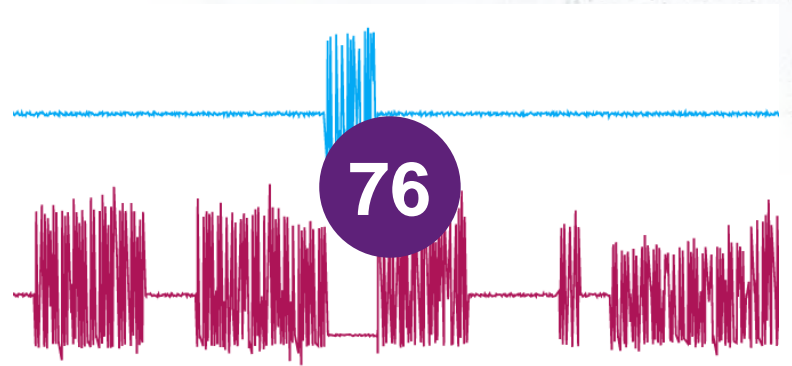
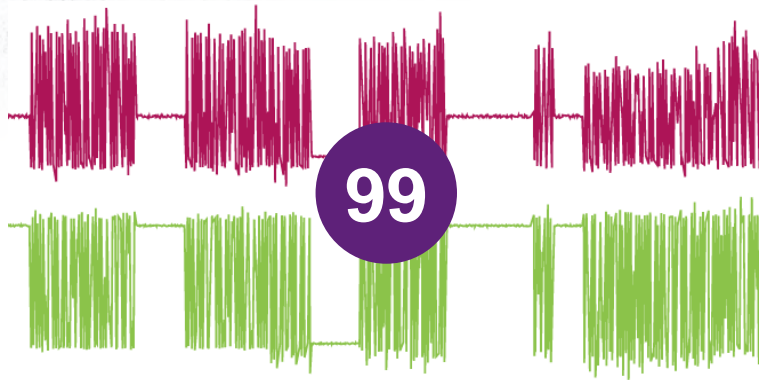
News: Next Up

- Automatically Detect “Systems”
 - Interrelated tags
 - Examples: Control loops, boiler temp/pressure
- Model & Detect System Anomalies
- Integrate
 - Alerts
 - News
 - Collaboration (Teams, Slack, etc.)?



Newsfeed “Systems Detection”





Online Maturity

2010 2011 2012 2013 2014 2015 2016 2017 2018

SmartGlance



Historian
Online



Wonderware
Newsfeed



Hybrid



Utilization



Visualization



+



+



+



+



+



Search Results
3 matches

3 TAGS
All Tags

Mixed data

3 TAGS
I/min

Numeric data

Flows

4/25/2018 3:58:48 am - 4/25/2018 4:58:48 am



This slide includes an embedded video

OEM: Irrigation Management

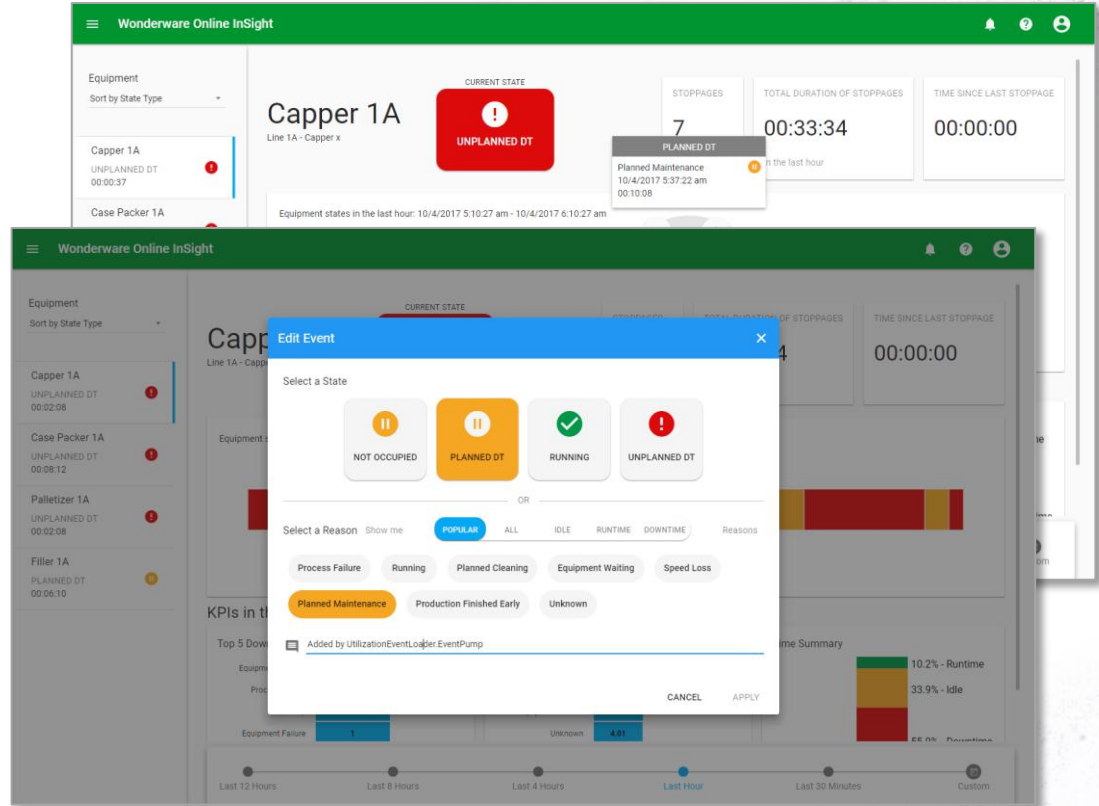


- Provides
 - Water rights reporting
 - Optimize water usage
- Data
 - Water usage
 - Soil moisture
 - Telvent Weather: historic/forecast



Utilization/Performance

- Optional add-on to InSight
- December: all manual
- May: automatic data collection from InSight



InSight Performance Module

- Equipment Performance for “Industry 4.0”
 - Browser-based access
 - Lightweight deployment
 - “Edge” deployment
- Reduces the “TCO” and “Time to Value”
- Compliments on-premise OEE/Performance



InSight
Performance

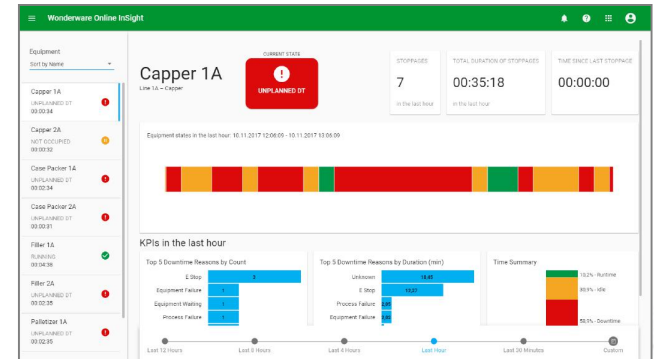


MES Performance

Equipment Performance

Ideal For Customers:

- Focused on visibility vs. process enforcement
- Require simple, fast deployment/time-to-value
- Comfortable with cloud-based solutions



InSight Performance: Equipment Monitoring

Equipment Monitoring



Copper 1A
Line 1A - Copper

CURRENT STATE
UNPLANNED DT

STOPPAGES
7
in the last hour

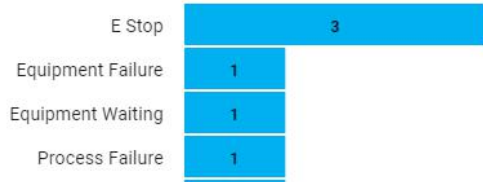
TOTAL DURATION OF STOPPAGES
00:35:18
in the last hour

TIME SINCE LAST STOPPAGE
00:00:00

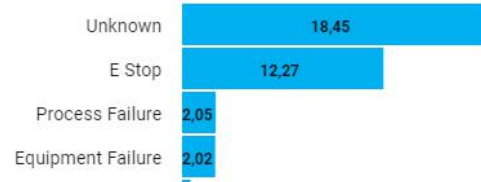
Equipment states in the last hour: 10.11.2017 12:06:09 - 10.11.2017 13:06:09

KPIs in the last hour

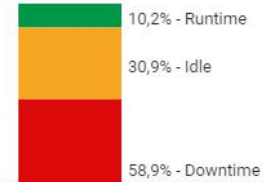
Top 5 Downtime Reasons by Count



Top 5 Downtime Reasons by Duration (min)



Time Summary







Insight Performance – Equipment Monitoring Experience...

Manual
Utilization
Event
Creation



Select a State


 NOT OCCUPIED	 PLANNED DT	 RUNNING	 UNPLANNED DT
---	---	--	---

OR

Select a Reason

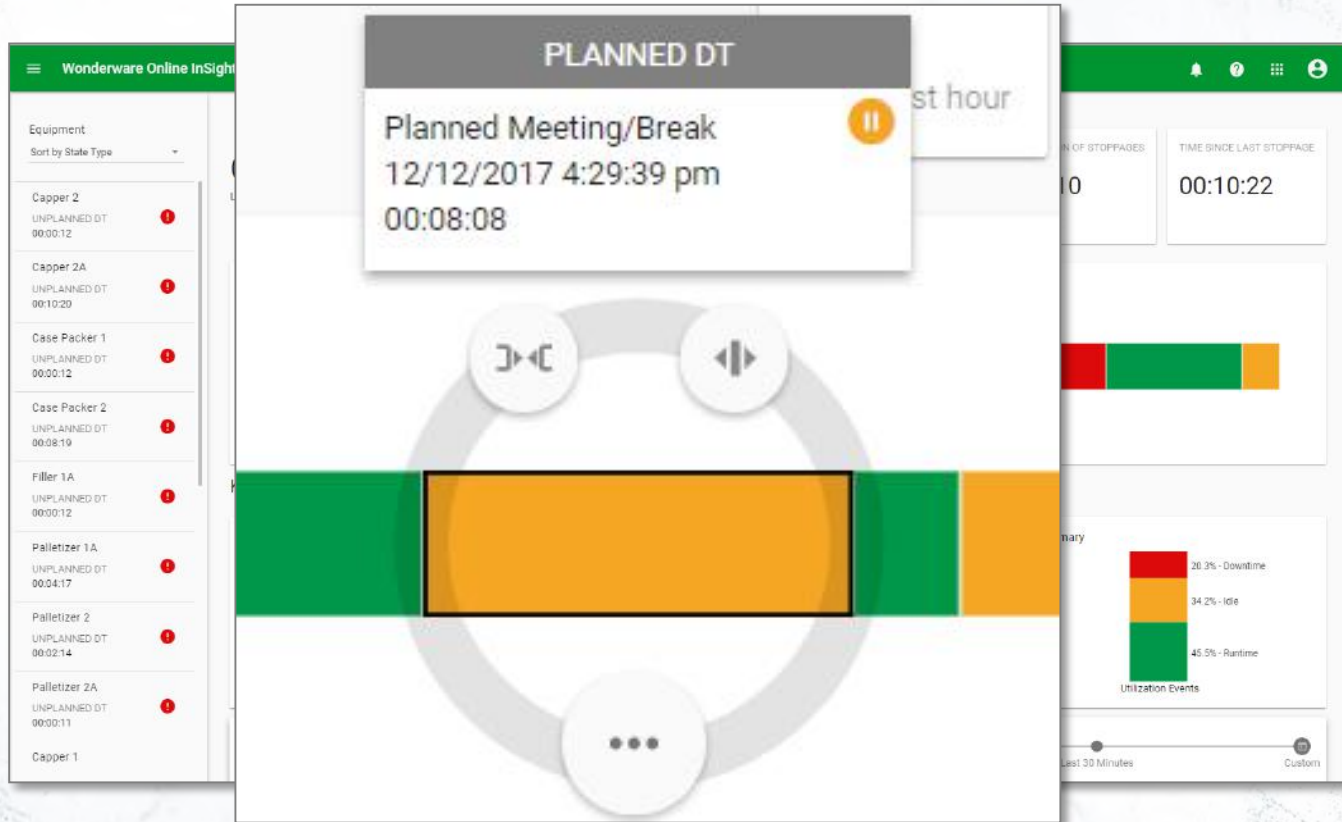
POPULAR ALL IDLE RUNTIME DOWNTIME

Planned Meeting/Break	Running	Speed Loss	Planned Changeover
Conveyor Motor Failure	Equipment Motor Failure	Outfeed Jam	Trials

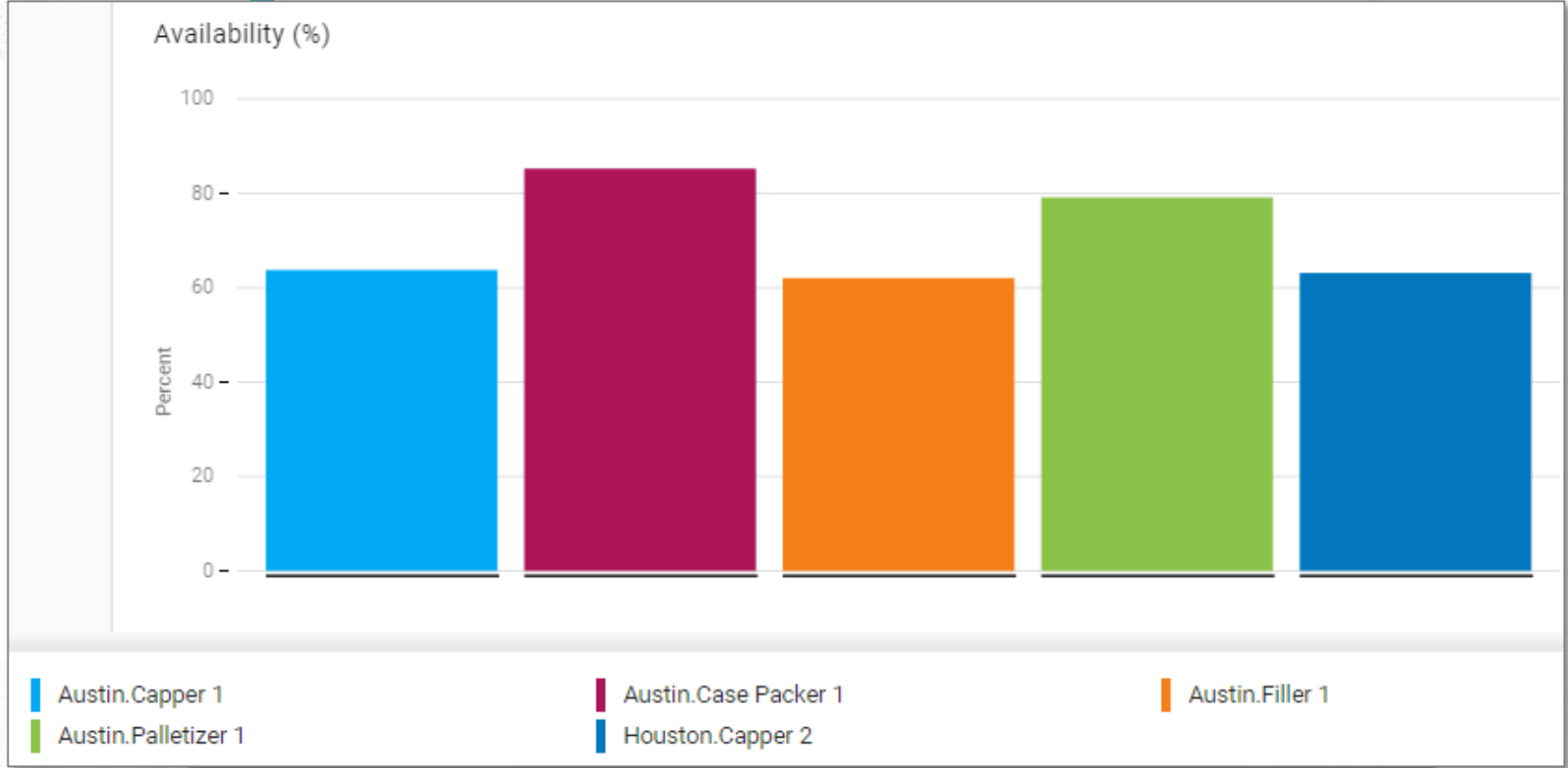
 Add Comment

Insight Performance – Equipment Monitoring Experience...

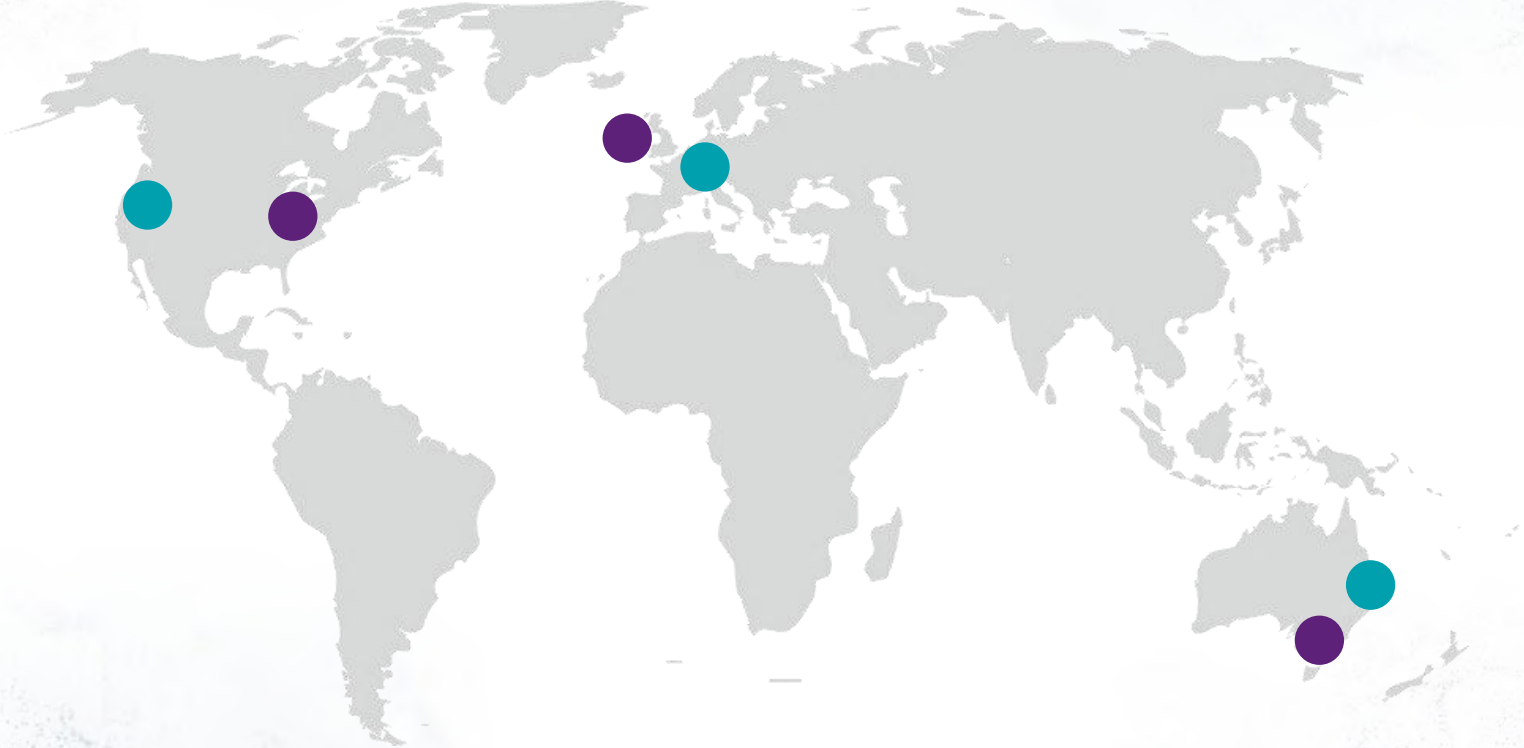
Utilization
Event
Reconciliation



Value: Insight Into Utilization



Paired Data Centers In North America, Europe & Australia

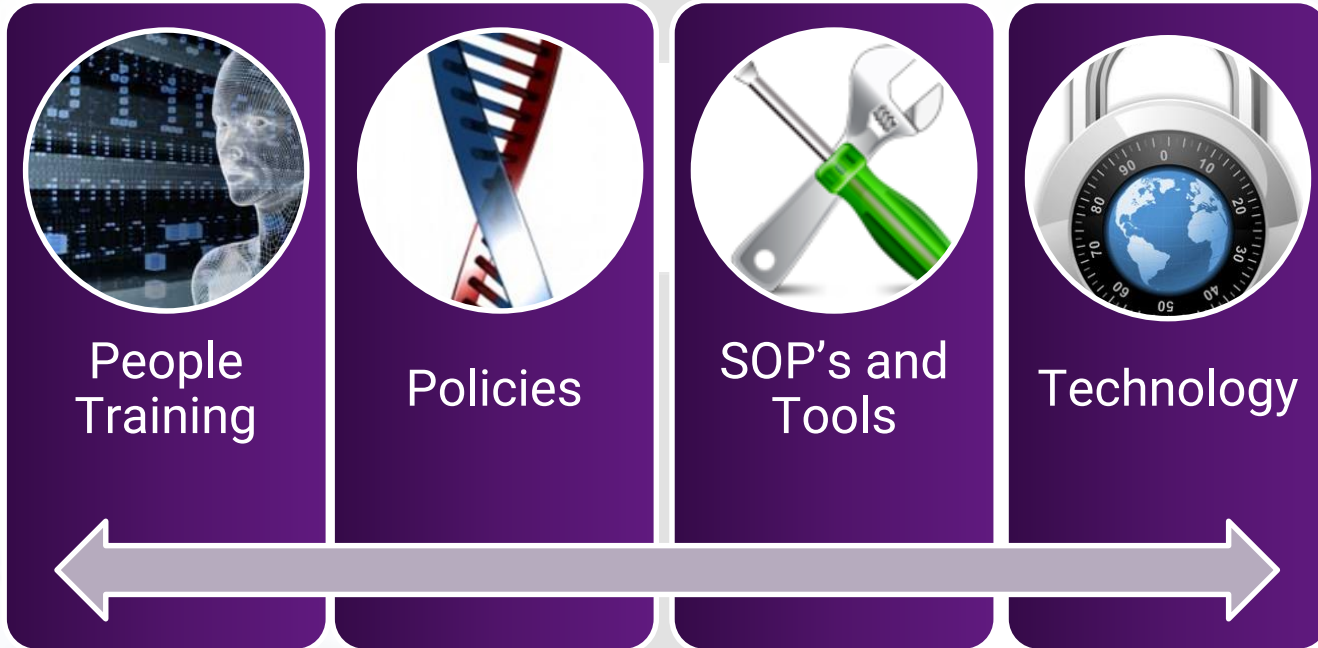


OEM: Bus Fleet Monitoring

- Batch upload from depot
- Traditional Architecture
 - On-premises Wonderware Historian
 - Custom data collection infrastructure
- New Architecture
 - Wonderware Online InSight
 - Direct to Internet upload

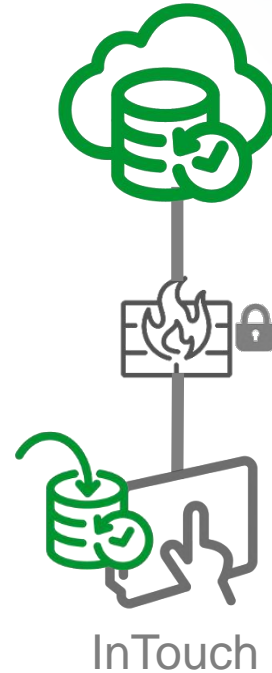


A Holistic Approach to Security



Security Across The “Stack”

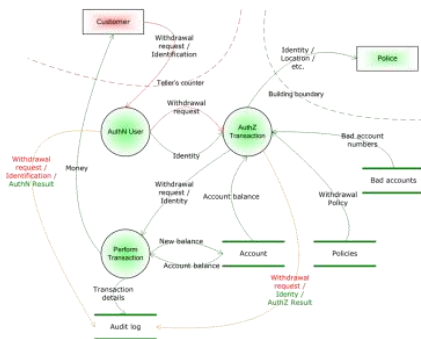
- At Rest: Segregated, Encrypted
- In Motion:
 - HTTPS/TLS with trusted certificate
 - Only outbound connections
 - Limited, well-defined endpoints (3)
- Data Source Authentication
 - Initially registered by a user
 - Permanent credentials locked to machine



- User Authentication
 - XAML/Oauth
 - External identity provider
 - Azure AD (soon)

Security In Wonderware Online InSight

- Expected
 - Encryption “at rest” and “in motion”
 - Mitigate common browser exploits
- Methodology
 - ISASecure Certification (IEC 62443-4-1)
 - Detailed threat modeling
 - “Defense in depth” strategy (assume 1+ layers get compromised)
 - Externally-managed credentials (we can’t get yours)
- External Expertise
 - Outside audits
 - Penetration testing: access denied
 - Open access granted: no customer data compromised



Merchants Securing Credit Card Data



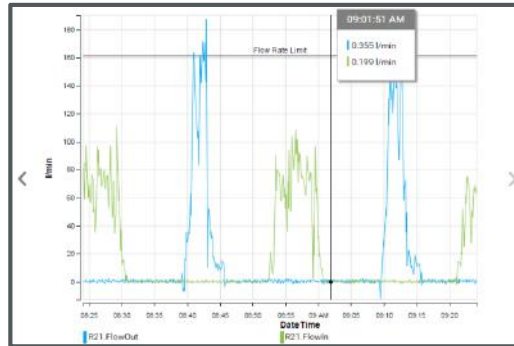
1234 5678
JOHN R SAMPLE



8765 4321
05/15



Securing Industrial Data



186.3512

Tag-specific encoding

5d6e0705-dde2-4b2e-9ac4...
2018-03-17T16:22:54.434Z
0.346565
192

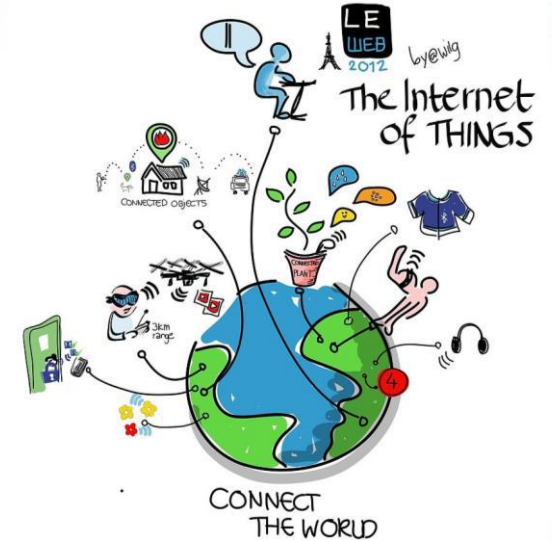
5d6e0705-dde2-4b2e-9ac4...
20.0 - 500.0
R21.Level
Liters
...



On Applications registers & encryption

What's Next?

- Increase the value of information you have
 - Make it more accessible to staff
 - Look beyond control network & workstations
 - Consider equipment & raw material suppliers
- Look for new data collection opportunities
 - Peripheral areas using cost-effective IoT sensors
 - Leverage IoTView for “edge” & embedded applications
 - Extend HMI-only applications with Wonderware Online InSight



Interested?

<https://online.wonderware.com>

Free 45-day trial
With your data

Wonderware
by Schneider Electric

LEARN MORE

Wonderware Online

Turn your data into Insights.
It is that simple.

TRY IT NOW

Looking for InStudio?

EMAIL

PASSWORD

LOG IN

RESET MY PASSWORD

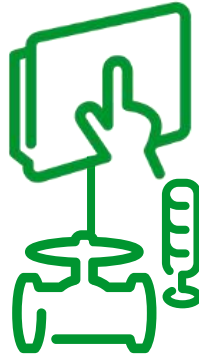
© 2018 AVEVA Group Plc. All rights reserved.
The Schneider Electric industrial software business and AVEVA have merged to make an AVEVA Group plc, a UK listed company.
The Schneider Electric and Life is On! trademarks are owned by Schneider Electric and are being licensed to AVEVA by Schneider Electric.

Experience
most end-user
features

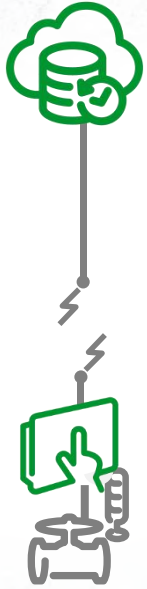
THANK YOU



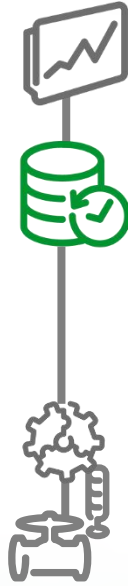
What If You Only Have InTouch?



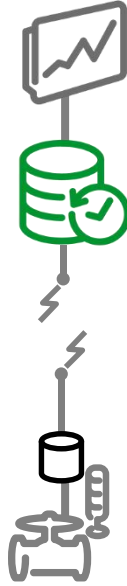
Historian Deployment Options



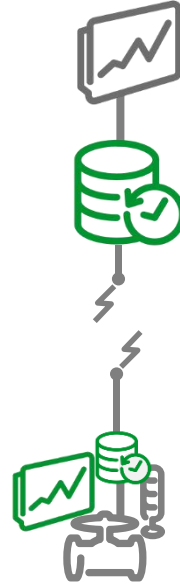
1. Wonderware Online
(no infrastructure)



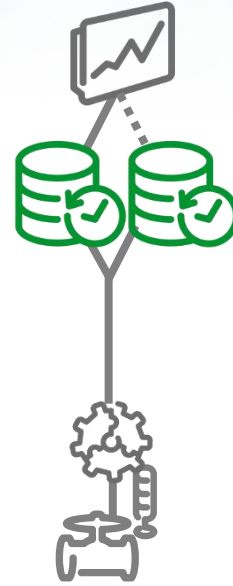
2. Simple On-Premise



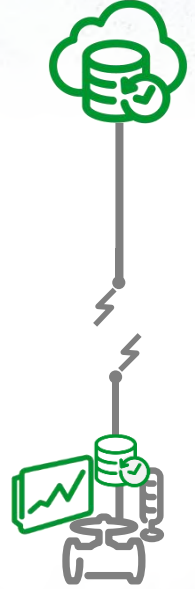
3. Remote IDAS
(no local clients)




4. Local Edition
(local & central clients)



5. Redundant
(reliable access)



6. On-Premise + Online

A blue and white BC Transit Fuel Cell Bus is shown in profile, facing left. The bus has "BC Transit" and "FUEL CELL BUS" written on its side. The background is a dark blue gradient.

“Wonderware Online has enabled Ballard to rapidly and securely implement a cloud-based approach to monitoring our fuel cell products in operation globally. The real-time data and insights that we retrieve, combined with the analytic capabilities, are supporting sound decision-making for Ballard and for our customers.”

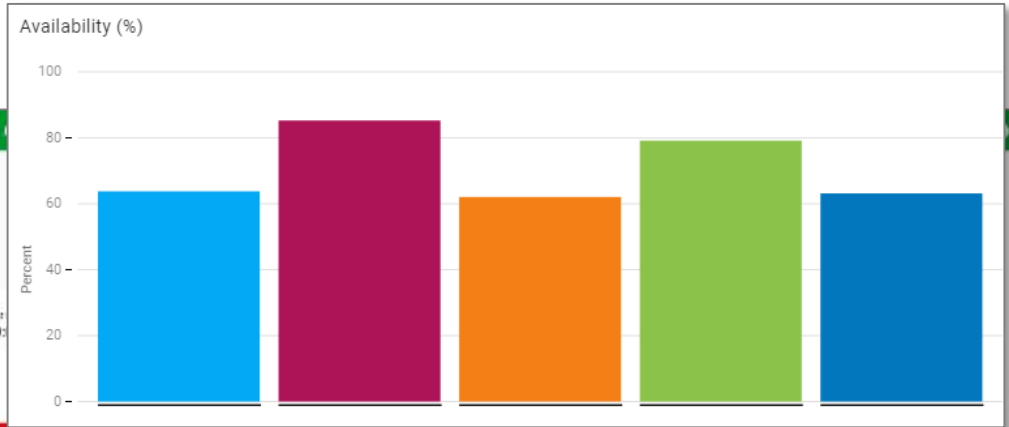
Kevin Colbow
VP Technology & Product Development
Ballard Power Systems

Workware Online Insight

Equipment: Capper 2
 Task: Capper 2
 UNPLANNED DT

3 Stoppages
 Total duration of stoppages: 00:19:10
 Time since last stoppage: 00:00:00

Equipment states in the last hour: 4/10/2018 3:56:35 am - 4/10/2018 4:56:35 am



3 Stoppages

Total Duration of Stoppages: 00:19:10

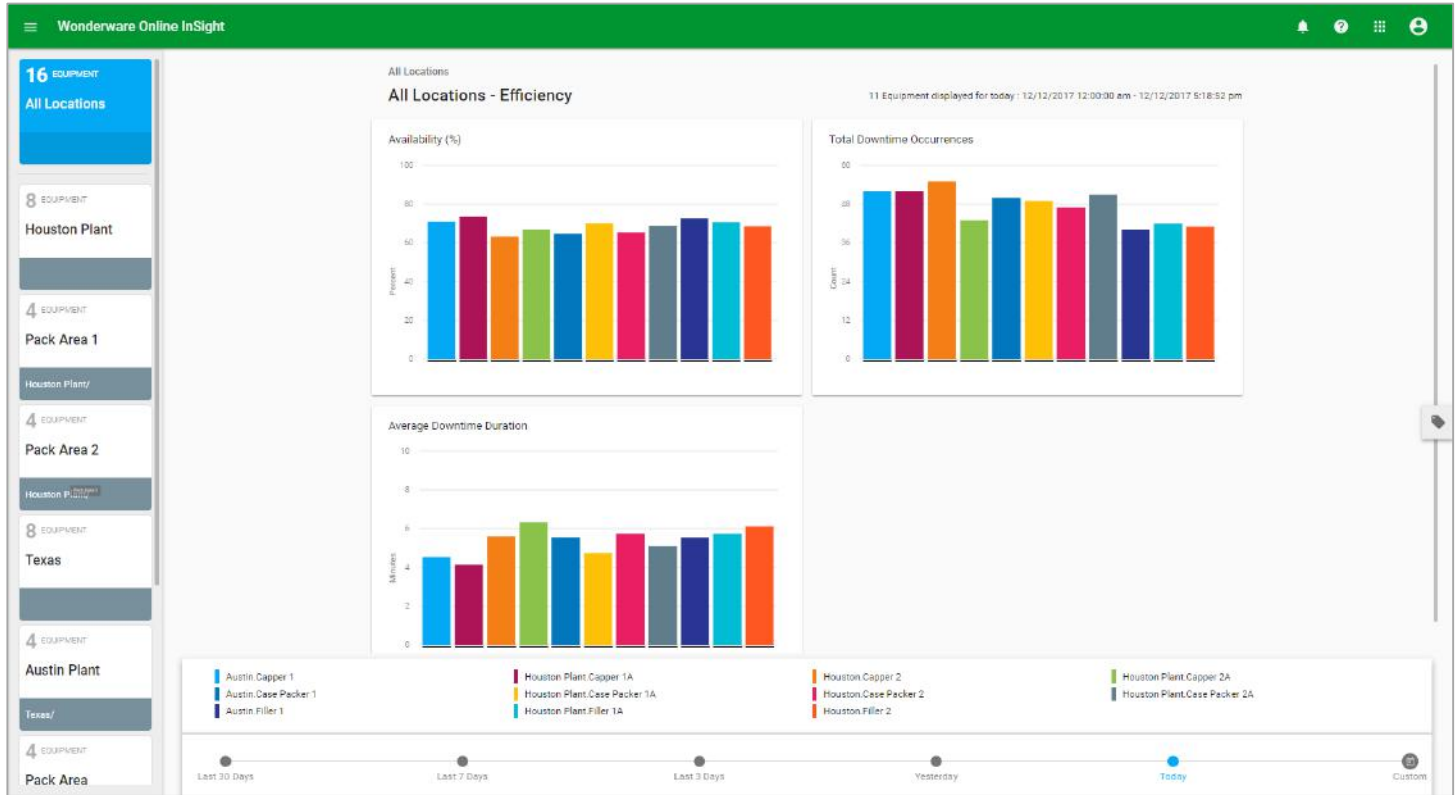
Time Since Last Stoppage: 00:00:00

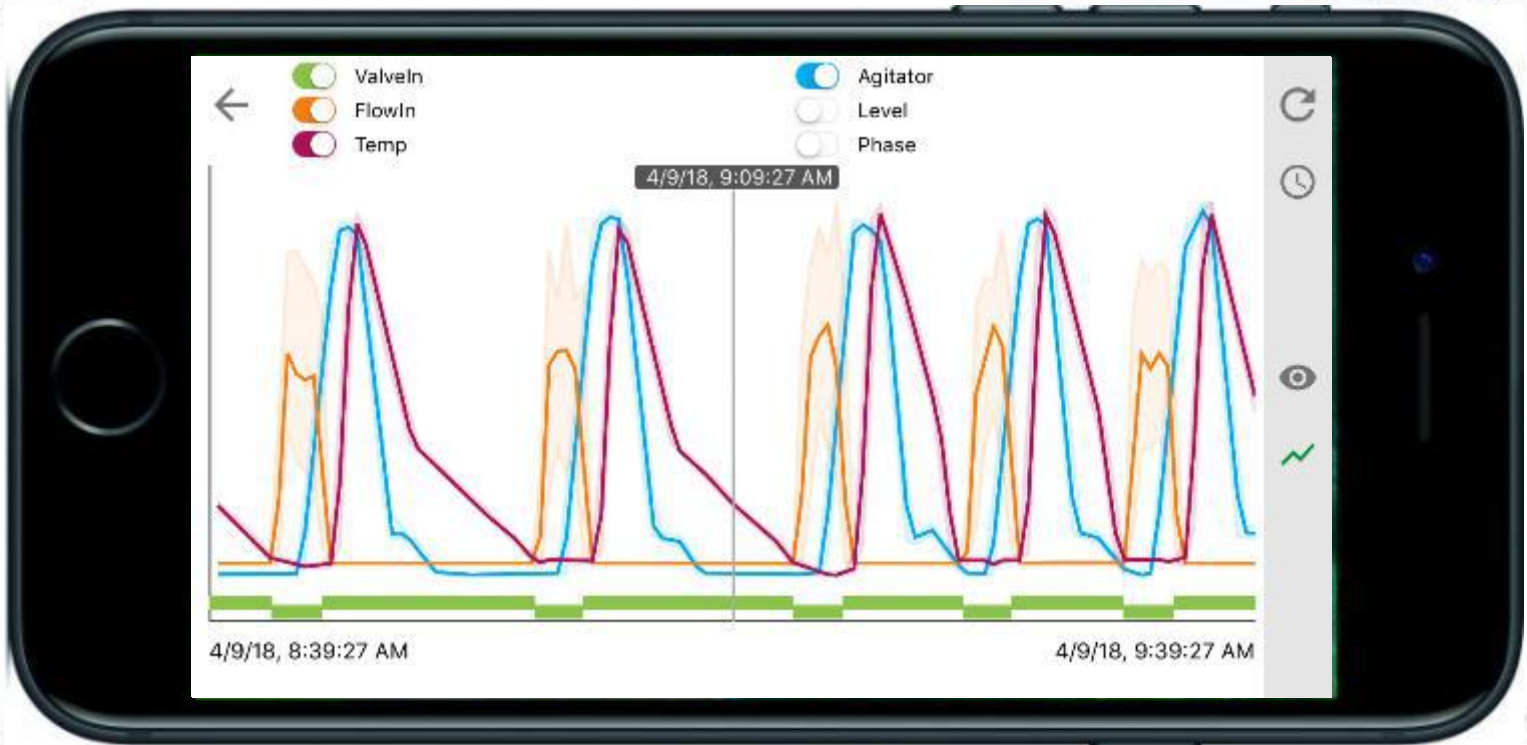
Equipment states in the last hour: 4/10/2018 3:56:35 am - 4/10/2018 4:56:35 am



Insight Performance – Reporting & Analysis Experience...

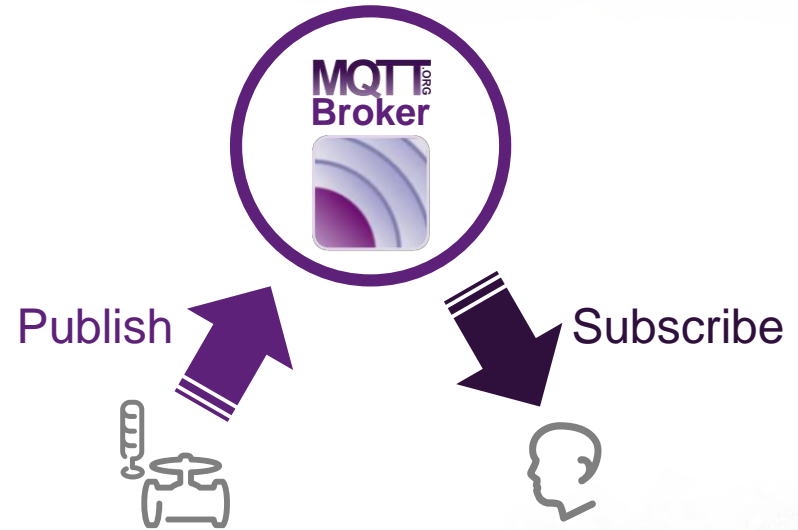
Efficiency Analysis





Message Queue Telemetry Transport (MQTT)

- Clients
 - Publish
 - Subscribe
- Broker
 - Manages subscriptions
 - Can be secured
 - Runs on-premises, online
- Loosely organized by “topic” (hierarchical path)



MQTT Topics

- Topic Syntax

- Delimiter: /
- Single-level wildcard: +
- Multi-level wildcard: #

- Message Format

- Application-specific text
- JSON common

site3/+/speed



site3/line1/speed



site3/line1/mixer/speed



site3/line2/speed



site3/line2/mixer/speed

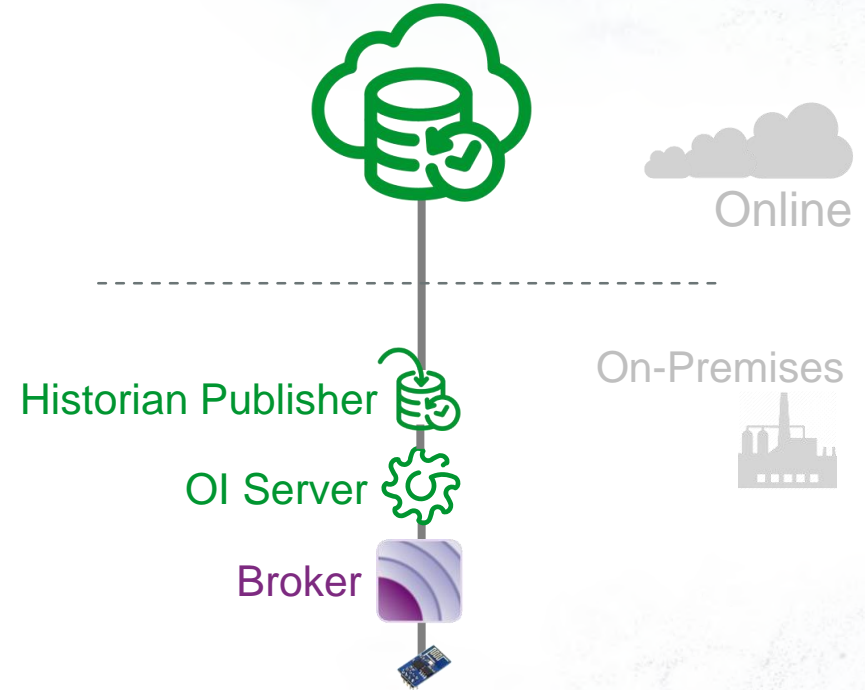
site3/#/speed



```
{  
  "d":27.123,  
  "dt"4,  
  "ts":"2016-10-03T14:21:57.341000Z",  
  "q":192  
}
```


Use Case 2: New Application

- Minimal existing infrastructure
 - Wired/wireless network
 - Internet
- Cost-effective I/O
- Add
 - Historian Publisher
 - OI Gateway
 - Broker

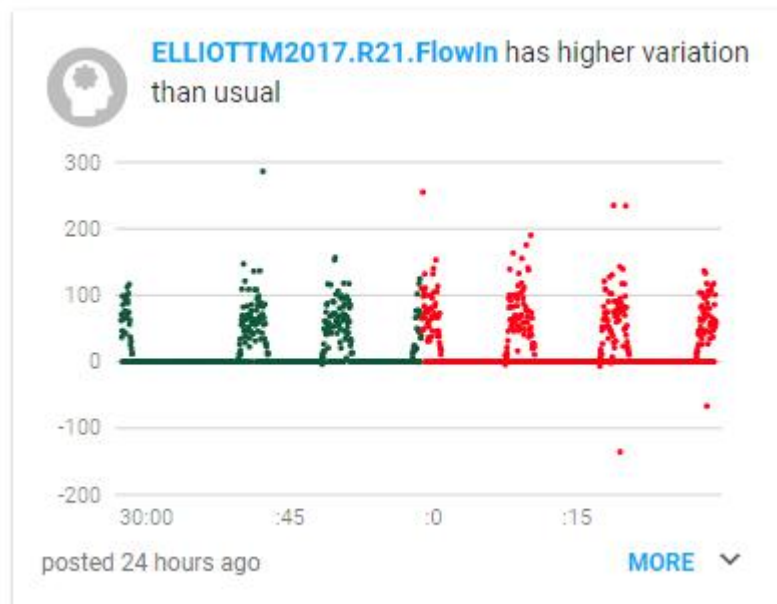
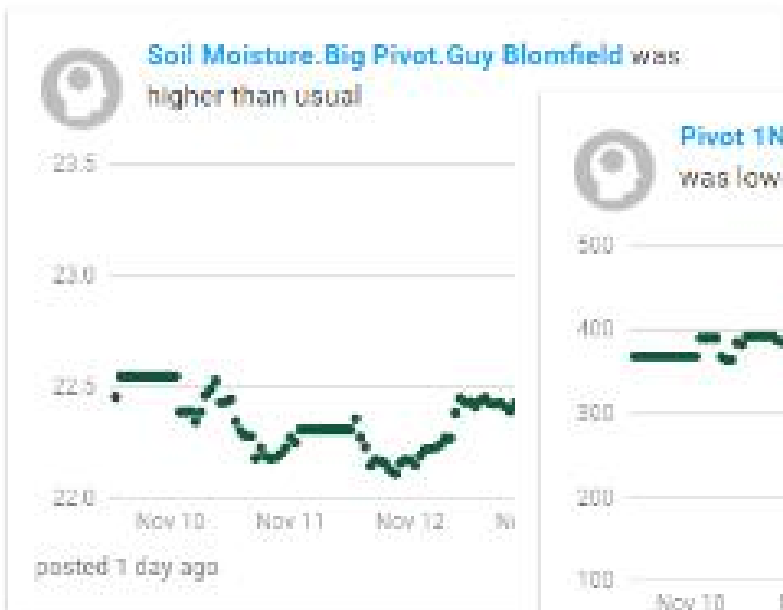


Use Case 3: Pure IoT

- No existing infrastructure
- Secure, private communications
 - SigFox (Europe, Australia)
 - LoRa (North America)
- Cost-effective I/O
- Direct to Wonderware Online InSight



Recent Entropy Example



DIY

“We’re doing it ourselves with _____”

(Hadoop, MongoDB, Data Lake...)



Proof Of Concept



Uses Wonderware Online InSight

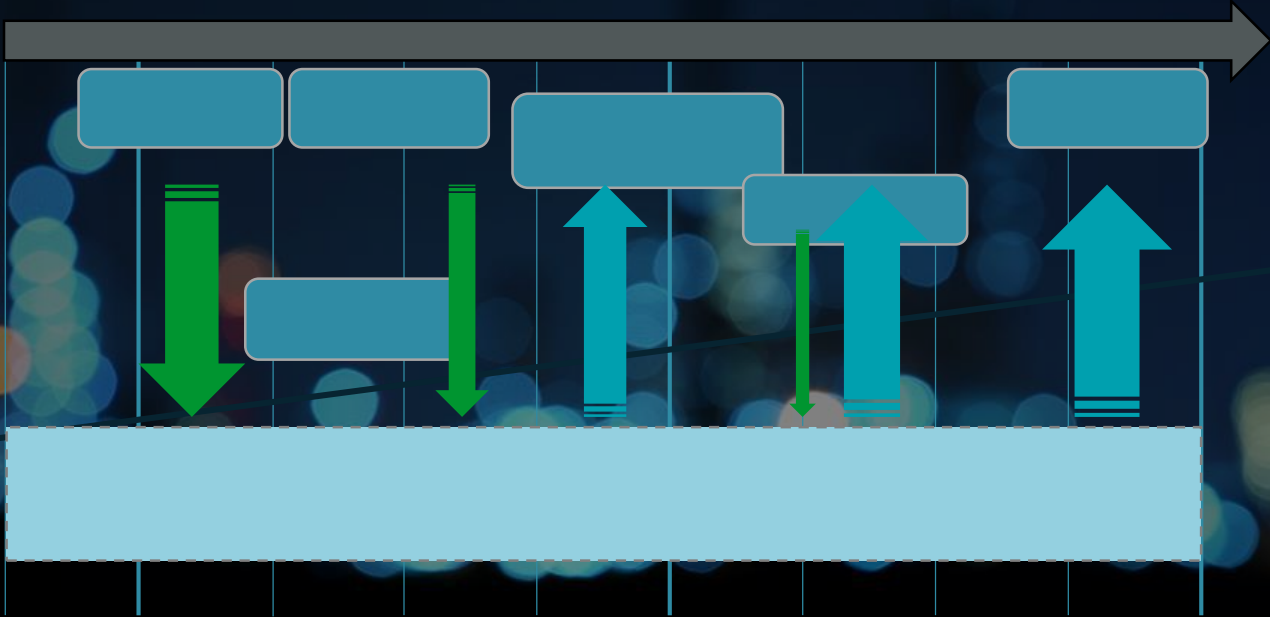
Current Interactions

Anything unusual happened?
(Newsfeed)

Selected data sets
(Compares averages 24-hours ago)

“Idea,” not yet a “Plan”

Information Roadmap Emphasis



Roadmap – Hybrid Cloud Solutions



Search for saved content, data tags, or keyword

Content

Overview Analyze Plan Optimize Operate Maintain Visualize

Inspections Overdue

Lens

- Current
- Past
- Operations
- Maintenance
- Costs

Procedures On Demand Logs

View List

- General Information
- Parts
- Activities
- Activity History
- Hierarchy
- Open Work
- PM Program
- PM Triggering History
- Procedures and Safety
- Cost Summary
- Cost Transactions
- Serialized Items
- Purchases
- Statistics Summary

Cost Summary

Time Group: Yearly From: F2002 To: F2016

All Costs

2 OVERDUE 3 NEW

3 IN PROGRESS 0 CANCELLED

EARLY WARNING DETECTION

Turbine Pump Fan

